

11  
Spem in a - li - um nun - quam ha - - - -

16  
bu - i, nun - quam ha - bu - i, in a - li - um nun -

20  
quam ha - - - - bu - i, in a - li - um nun - - - - quam

24  
in a - li - um ha - bu - i, 9 prae - ter in te, De -

37  
us Is - ra - el, prae - ter in te, De - us

42  
De - us De - - - us in te, De - us Is - ra - el: 16

62  
Qui i - ra - sce - ris, et pro - pi - ti - us e - ris. 3

69  
Et o - - - mni - a pec - ca - ta ho - mi - num,

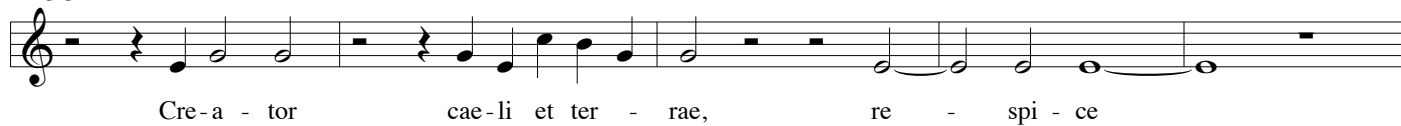
73  
pec - ca - ta ho - mi - num, in tri - bu - la - ti - o - ne 8 di - mit -

85  
tis, di - mit - tis, di - mit - tis, Do - mi - ne De - us,

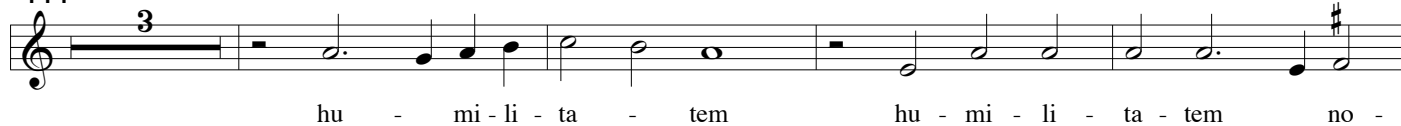
90  
Do - mi - ne De - us, 4 Cre - a - tor cae - li et

98  
4 ter - rae, Cre - a - tor cae - li et ter - rae,

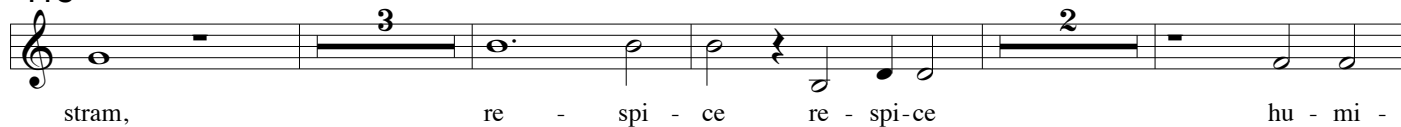
106



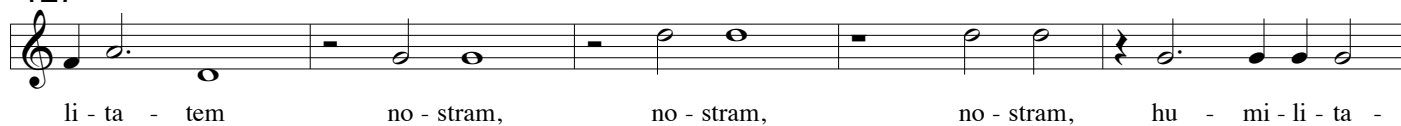
111



118



127



132



136

